

FORM 3 EXAM.

INSTRUCTION TO CANDIDATES

Answer all questions.

SECTION A (30 MARKS)

Answer ALL questions in this section in the space provided

1. Define the following terms as used in livestock nutrition
(a) Digestible crude protein (1mk)
(b) Total digestible nutrients (1mk)
(c) State **four** differences between ruminants and non- ruminants (4mks)
(i)
(ii)
(iii)
(iv)
2. Outline **four** reasons for inbreeding in livestock production (2mks)
(i)
(ii)
(iii)
(iv)
3. Differentiate between the following terms in livestock management
(a) Crutching and ringing (1mk)
(b) Topping and serving.....(1mk)
4. Give **four** features of an ideal calf pen (2mks)
(i)
(ii)

- (iii)
- (iv)

5. State **two** uses of a foot bath in a cattle dip (1mk)
(i)
(ii)

6. Name the minerals whose deficiency in the body of animals would bring the following conditions
(i) Milk fever (½ mk)
(ii) Pica.....(½ mk)
(iii) Paraketosis(½ mk)
(iv) Head retraction in chicks(½ mk)

7. State **four** non-chemical methods of tick control (2mks)
(i)
(ii)
(iii)
(iv)

8. Outline **four** factors that affect digestibility of feeds in livestock (2mks)
(i)
(ii)
(iii)
(iv)

9. Name the tool required for carrying out each of the following farm operations
(a) Smoothing curved wooden surfaces (½ mk)
(b) Holding, tightening and loosening metallic pipes (½ mk)
(c) Trimming hedges and shrubs.....(½ mk)
(d) Injecting medicines of vaccines into animals(½ mk)

10. State **two** functions of crop in poultry digestive system (1mk)
(i)
(ii)

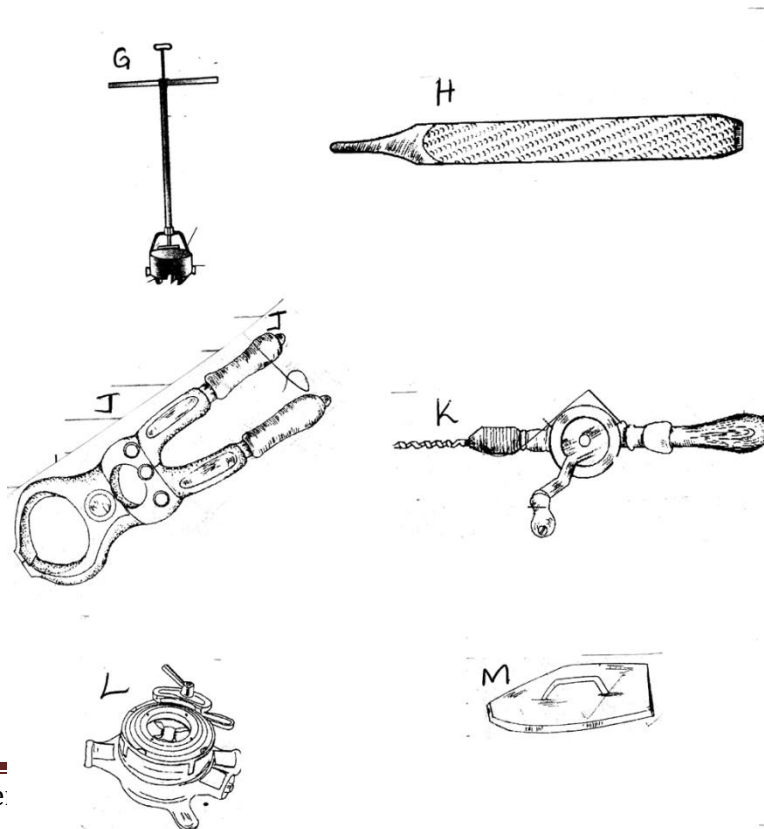
11. State **four** characteristics of beef cattle breeds (2mks)
(i)
(ii)
(iii)
(iv)

12. State **four** parts of a piggery (pigsty) unit (2mks)
- (i)
- (ii)
- (iii)
- (iv)
13. Give an example of each of the following livestock breeds
- (a) A dual purpose sheep breed (½ mk)
- (b) A meat goat breed(½ mk)
- (c) A beef cattle breed(½ mk)
- (d) A pig breed that is white in colour with dished snout and upright ears (½ mk)
14. State **four** reasons for keeping livestock healthy (2mks)
- (i)
- (ii)
- (iii)
- (iv)

SECTION B (20mks)

Answer all the questions in this section

15. The diagrams below represents farm tools and equipment . Study them carefully then answer the questions that follow.



(a) Identify the tool /equipment labeled

G(½ mk)

H.....(½ mk)

(b) State the use of each of the tool /equipment labeled L and M

L(1 mk)

M.....(1 mk)

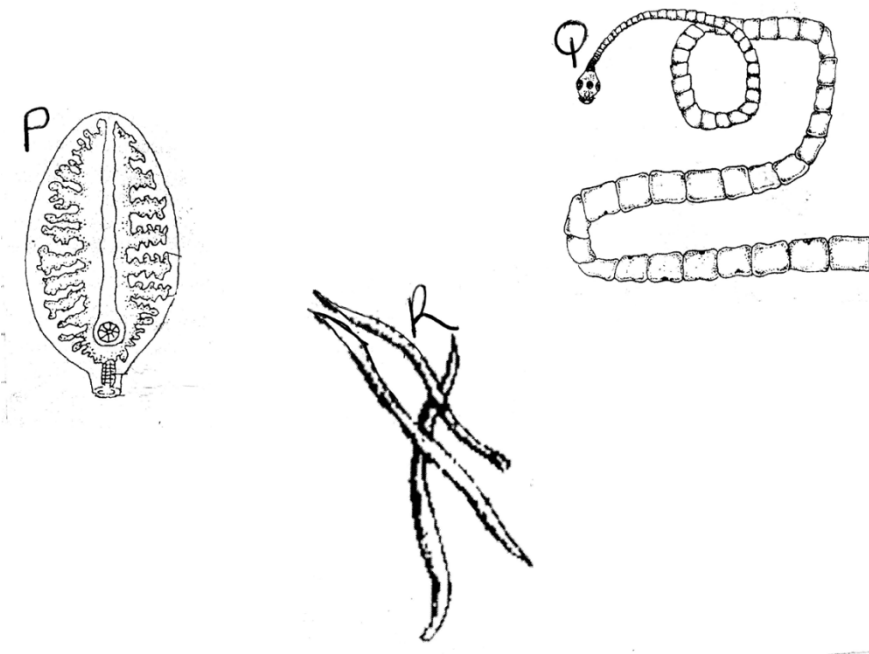
(c) State **two** maintenance practices of tool labeled J (2mks)

.....

(d) Name the complimentary tool/equipment to tool K (½ mk)

.....

16. Study the illustrations below and answer



(a) Identify the parasite labeled P, Q and R

(1 ½ mk)

P

Q.....

R.....

(b) Name the intermediate host of parasite P and Q

(1mk)

P

Q.....

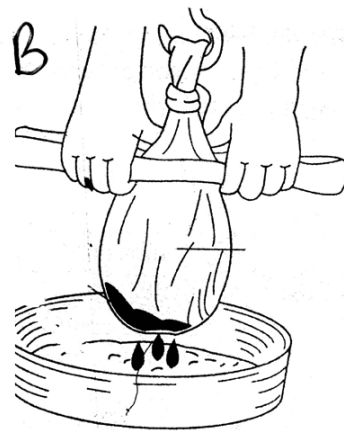
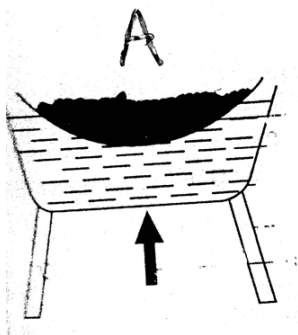
(c) Mention **two** control measures of parasite Q

(2mks)

(i)

(ii)

17. The diagrams below illustrates methods of honey processing



(a) Identify the method shown above

A.....(1mk)

B.....(1mk)

(b) State **one** advantage of honey processing using method B

(1mk)

.....
.....

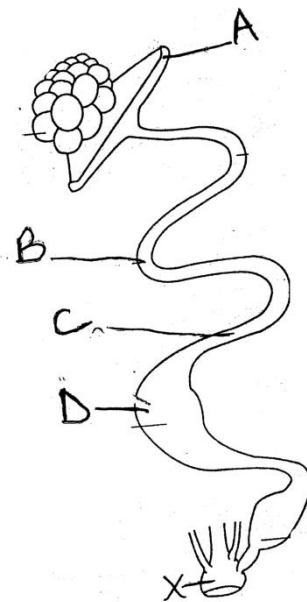
(c) Mention **two** factors that affect the quality of honey

(2mks)

(i)

(ii).....

18. The illustration below shows reproductive system of a hen. Study it carefully then answer the questions that follow.



(a) Name the parts labeled A, B, C and D

(2mks)

A.....
B.....
C.....
D.....

- b) State **one** function of each of the following parts in the diagram above
- (i) A (1mk)
- (ii) D (1mk)
- c) State one feature of part X that would help a farmer cull a poor layer from the breeding stock (1mk)
-
-
19. (a) Discuss the general measure used to control livestock diseases (12mks)
- (b) Describe the life cycle of a two – host tick (8mks)
20. (a) Explain five factors that are considered during the selection of a breeding stock (10mks)
- (b) Outline **five** reasons why bees swarm (5mks)
- (c) State **five** factors considered when selecting construction materials for farm structures (5mks)
21. (a) Describe the process followed when establishing a fish pond (5mks)
- (b) Explain the uses of various hand tools used in construction of a Kenya Top Bar Hive (5mks)
- (c) Describe features of an ideal calf pen (5mks)
- (d) Describe five uses of fences in a farm (5mks)
22. Describe measures which should be taken to minimize water pollution in a farm (20mks)
23. (a) Outline **five** characteristics of a dairy cow (5mks)
- (b) State the reasons for maintaining farm tools and equipment (5mks)
- (c) Discuss mastitis disease in livestock under the following sub-headings
- (i) Causal agent (1mk)
- (i) Predisposing factors (4mks)
- (ii) Symptoms (3mks)
- (iii) Control measures (2mks)
-

